

# The CJV150 series turns an idea into reality

High-quality printing and sharp, accurate cutting generate fresh, brilliant ideas.



## CJV150 Series

Inkjet printer/cutter with silver ink

### CJV150-75

Width: 0.8 m

Suitable for a handy making of stickers and labels

Small-footprint CJV150-75 is suitable for stickers, labels, artistic posters, and point of sales materials.



### CJV150-107

Width: 1.1 m

Suitable for quick POPs and large-size posters

The CJV150-107 delivers a quick output while preserving product quality.



### CJV150-130

Width: 1.3 m

Suitable for variously sized signage and point-of-sale marketing materials

The wider but modestly-sized CJV150-130 meets variable design demands.



### CJV150-160

Width: 1.6 m

Suitable for cost effective production of large, high-quality signage and vehicle wrapping films

The CJV-150-160 has the widest working width among the models, and satisfies a wide range of market demands including quality and cost.

#### Software

Newly developed RIP software compatible with excellent user-friendliness and higher functionality

## Raster Link 6

Beautiful and advanced print realization by the simple and intuitive operation with useful icons and layout  
Enriched expressiveness with various functions including color replacement

<Supports Web update function>  
◆ Program update and profile download can be easily performed via internet.

#### Specifications

Item	CJV150-75	CJV150-107	CJV150-130	CJV150-160
Printhead	On-demand piezo head			
Print resolution	360 dpi, 540 dpi, 720 dpi, 1080 dpi, 1440 dpi			
Maximum print width	800 mm (31.4 in)	1,090 mm (42.9 in)	1,361 mm (53.5 in)	1,610 mm (63.3 in)
Maximum media width	810 mm (31.8 in)	1,100 mm (43.3 in)	1,371 mm (53.9 in)	1,620 mm (63.7 in)
Ink	Type/Color	Eco-solvent ink SS21 (C, M, Y, K, Lc, Lm, Lk, Or, W, Si) ES3 (C, M, Y, K, Lc, Lm, W)	BS3 (C, M, Y, K) only available in emerging countries BS4 (C, M, Y, K) only available in emerging countries	Water-based sublimation ink Sb53 (Bl, M, Y, K, DK, LBl, Lm) Sb54 (Bl, M, Y, K, LBl, Lm)
	Package size	SS21: 440 ml Ink cartridge/2 L Ink pack <sup>*1,3</sup> ES3: 440 ml Ink cartridge <sup>*2</sup>	BS3: 600 ml Ink pack <sup>*4</sup> / 2 L Ink pack <sup>*3</sup> BS4: 600 ml Ink pack <sup>*4</sup> / 2 L Ink pack <sup>*3</sup>	Sb53: 440 ml Ink cartridge/2 L Ink pack <sup>*4</sup> Sb54: 440 ml Ink cartridge/2 L Ink pack <sup>*4</sup>
	Circulation system	MCT (Mimaki Circulation Technology) (Only applies to white and silver inks)		
Media thickness	1.0 mm or less			
Rolled media weight	40 kg (88 lb) or less			
Certifications	VCCI class A / FCC class A / ETL UL 60950 CE Marking (EMC, Low voltage, and Machinery directive) / CB RoHS / REACH and Energy Star / RCM			
Interface	USB 2.0, for E-mail notification function			
Power supply	Single-phase (AC 100-20V / AC 220-240V)			
Power consumption	100V: 1.44kW, 200V: 1.92kW			
Operational environment	Temperature: 20-30°C (68-86°F), Humidity: 35-65% Rh (Non condensing)			
Dimensions (W x D x H)	1,965 mm x 700 mm x 1,392 mm (77 in x 28 in x 55 in)	2,255 mm x 700 mm x 1,392 mm (89 in x 28 in x 55 in)	2,525 mm x 700 mm x 1,392 mm (99 in x 28 in x 55 in)	2,775 mm x 700 mm x 1,392 mm (109 in x 28 in x 55 in)
Weight	126 kg	142 kg	157 kg	168 kg

\*1: White and silver are provided in 220 ml Ink cartridge only.  
\*2: White is provided in 220 ml Ink cartridge only.  
\*3: Optional MBIS3 (Mimaki Bulk Ink System3) is required for using 2 L Ink pack.  
\*4: Eco case 4 (OPT-J0361) is required for using 600 ml ink pack.

#### Supplies

Item	Color	Item No.	Remarks			
SS21	Cyan	SPC-0501C	440 ml Ink cartridge			
	Magenta	SPC-0501M				
	Yellow	SPC-0501Y				
	Black	SPC-0501K				
	Light Cyan	SPC-0501LC				
	Light Magenta	SPC-0501LM				
	Orange	SPC-0501Or				
	Light Black	SPC-0501Lk				
	White	SPC-0504W-2		220 ml Ink cartridge		
	Silver	SPC-0504Si		220 ml Ink cartridge		
	Cyan	SPC-0588C		2,000 ml Ink pack		
	Magenta	SPC-0588M				
Yellow	SPC-0588Y					
Black	SPC-0588K					
Light Cyan	SPC-0588LC					
Light Magenta	SPC-0588LM					
Orange	SPC-0588Or	2,000 ml Ink pack				
Light Black	SPC-0588Lk					
BS3	Cyan		SPC-0667C	600 ml Ink pack		
	Magenta		SPC-0667M			
	Yellow	SPC-0667Y				
	Black	SPC-0667K				
	Cyan	SPC-0693C	2,000 ml Ink pack			
	Magenta	SPC-0693M				
	Yellow	SPC-0693Y				
	Black	SPC-0693K				
	Sb53	Blue			SB53-BL-44	440 ml Ink cartridge
		Magenta			SB53-M-44	
		Yellow	SB53-Y-44			
		Black	SB53-K-44			
Deep Black		SB53-DK-44				
Light Blue		SB53-LBL-44				
Light Magenta	SB53-LM-44	2,000 ml Ink pack				
Blue	SB53-BL-2L					
Magenta	SB53-M-2L					
Yellow	SB53-Y-2L					
Black	SB53-K-2L					
Deep Black	SB53-DK-2L					
Light Blue	SB53-LBL-2L	2,000 ml Ink pack				
Light Magenta	SB53-LM-2L					
BS4	Cyan	BS4-C-60	600 ml ink pack			
	Magenta	BS4-M-60				
	Yellow	BS4-Y-60				
	Black	BS4-K-60				
	Cyan	BS4-C-2L		2,000 ml ink pack		
	Magenta	BS4-M-2L				
	Yellow	BS4-Y-2L				
	Black	BS4-K-2L				
	Sb54	Blue			SB54-BLT-44	440 ml Ink cartridge "ECO PASSPORT" Certification Ink
		Magenta			SB54-MT-44	
		Yellow		SB54-YT-44		
		Black		SB54-KT-44		
Light Blue		SB54-LBT-44				
Light Magenta		SB54-LMT-44				
Blue	SB54-BLT-2L	2,000 ml Ink pack "ECO PASSPORT" Certification Ink				
Magenta	SB54-MT-2L					
Yellow	SB54-YT-2L					
Black	SB54-KT-2L					
Light Blue	SB54-LBT-2L					
Light Magenta	SB54-LMT-2L					

\* SS21 is GREENGUARD Gold certification ink.

●Some of the samples in this catalog are artificial renderings. ●Specifications, design and dimensions stated in this catalog may be subject to change without notice for technical improvements etc. ●The corporate names and merchandise names written in this catalog are the trademark or registered trademark of the respective corporations. ●Inkjet printers print using extremely fine dots, so colors may vary slightly after replacement of the printing heads. Also note that if using multiple printer units, colors could vary slightly from one unit to other units due to slight individual differences. ●Please note that descriptions and data in this catalog are as of August 2019.

**Mimaki** MIMAKI ENGINEERING CO., LTD.  
mimaki.com  
2182-3 Shigeno-otsu, Tomi-city, Nagano 389-0512, Japan  
Tel: +81-268-64-2281

#### Mimaki Global Network

USA	MIMAKI USA, INC.	Europe	MIMAKI EUROPE B.V.
Brazil	MIMAKI BRASIL COMERCIO E IMPORTACAO LTDA	Indonesia	PT. MIMAKI INDONESIA
India	MIMAKI INDIA PRIVATE LIMITED	Australia	MIMAKI AUSTRALIA PTY. LTD.
Taiwan	MIMAKI ENGINEERING (TAIWAN) CO.,LTD.	China	SHANGHAI MIMAKI TRADING CO.,LTD.
Singapore	MIMAKI SINGAPORE PTE. LTD.	Thailand	MIMAKI (THAILAND) CO.,LTD.

**PDS**  
Print Digital Solutions

(416)297-7996 • (800)608-4506  
www.printdigitalsolutions.com  
sales@printdigitalsolutions.com

For  
SIGN  
GRAPHICS

Inkjet printer/cutter with silver ink

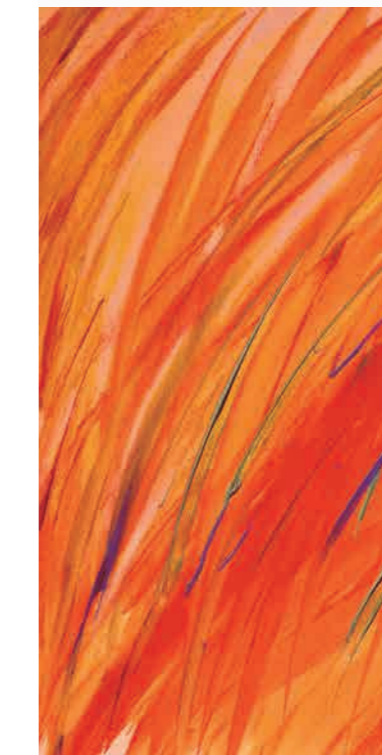
## CJV150 Series

### CJV150-75/107/130/160

**Mimaki**



MIMAKI'S HIGH-SPECIFICATION ENTRY MODEL



**Mimaki**  
Green Technology



# EXCEPTIONALLY BRILLIANT PRINTS

## Silver ink inspires imagination

Newly developed SS21 silver ink is available. Being 1.67\* times brighter than conventional silver inks, SS21 ink adds brilliant and beautiful mirror effects to print results.

\* Obtained from comparison measurements of SS21 and ES3 silver inks conducted at the Mimaki HQ.



Silver color added to catch copies and logos strikes a profound impression on the viewers, which makes silver printing very appealing.

The intensity of brightness in the silver ink varies as per the viewing angle. Such a high level of brightness attracts the viewer.

## Achieves a higher level of expression by using orange and light black inks

By using the orange ink as a process color, 94.8% of the PANTONE color chart is covered with approximate colors. Thanks to a wider gamut with the orange ink, food freshness can be simulated, and corporate colors can be faithfully represented. The light black ink improves the printed grayscale gradation. It also faithfully represents monochrome data without introducing unexpected color shifts. Light black ink ensures a more accurate color representation.

## The "Print and Cut" function immediately turns an idea into a real product

The multiple functions of the CJV150-75/107/130/160 models enable high-quality printing and high-accuracy cutting. The CJV150 alone completes the production of labels, stickers, and vehicle wrapping films.

### The continuous-register mark-detection function enables continuous media cutting.

The CJV150 automatically detects all register marks set by the RasterLink6 on the media, and cuts contour lines precisely by utilizing simultaneous automatic calibration.



### The over-cut and corner-cut functions ensure clearly cut edges with no residues.

The over-cut function ensures sharply cut edges with no residues by making a cross cut at the start and end positions of the contour cutting. The corner-cut function ensures sharply cut edges by making cross cuts at each corner.



### The clamp-pressure automatic-switching function enables continuous operation.

The pressure of the media clamps is automatically switched to a set value for printing and cutting. No pressure adjustment by the operator is required during continuous operation.

### The "Cut and Print" function improves the workability of thin materials.

This function prevents common problems, such as film separation and faulty cut results, by cutting the media before printing.

### The segment correction function facilitates precision cutting over longer-length prints.

This function detects intermediate register marks and enables four-point corrections for each segment to ensure accurate contour cutting over longer-length prints, even if the image is distorted.

### Print and cut on no-register mark media / Cut and print function

Media up to 1m in length do not require register marks. This function reduces the medium requirements.

### Versatile cutting methods satisfy a range of market demands.

"Normal cut" cuts the contour of printed image and holds the cut image on media. "Die cut" completely cuts the printed image from media. "Half cut" produces a unique perforated cutting, leaving a few connection points that retain the printed image on media. This function is useful for clipping images from media, and also used as crease lines.



# CAPTIVATING PRINTS

## Banding reduction

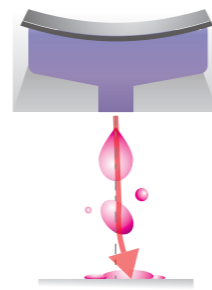
The reputable anti-banding function MAPS2 has been improved to MAPS3\*. Advanced MAPS3 scatters ink droplets and overlaps prints on areas of frequent banding.

\* MAPS3: Mimaki Advanced Pass System 3

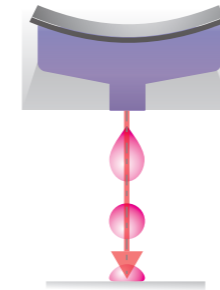


## Advanced ink jet technology ensures high-quality printing at all times

Mimaki's unique advanced ink jet technology allows the print head to jet each ink droplet at the appropriate jetting angle while retaining excellent ink droplet circularity. This advanced technology ensures that texts, lines, and edges are clearly printed.



Printing without waveform management

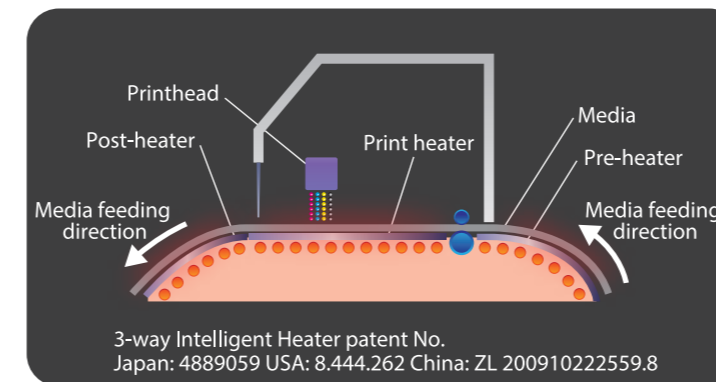


Printing with optimized waveform

## 3-Way intelligent heater

A 3-way intelligent heater fixes droplets placed on media. By using Mimaki's original technology in heating the media at a controlled temperature, ink can be fixed while maintaining high color development and high image quality. Thus the CJV150 provides both steady color development and easy handling after printing.

- Pre-heater: Heats media to the optimum temperature before printing.
- Print heater: Dries ink after it lands on media before it bleeds, improving color development.
- Post-heater: Enhances ink drying and achieves stable take-up.



3-way Intelligent Heater patent No. Japan: 4889059 USA: 8.444.262 China: ZL 200910222559.8

## Smooth gradation printing

By ejecting 3 different dot sizes (Large/Medium/Small), images are expressed smoothly without graininess, even in large-format printing. Furthermore, the Large dot size is 35pl and by using this size effectively, light and shade can be expressed firmly while using higher printing speed settings.

# SIMPLE AND PRACTICAL FOR EVERYDAY USE

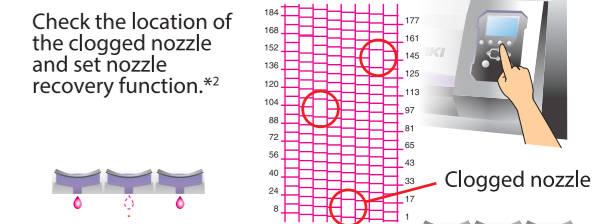
## Continuous operation support pack to minimize downtime

The CJV150-75/107/130/160 is prepared with the following continuous operation support pack to minimize downtime in case of emergency such as machine failure.

### Productivity maintenance - NRS\*1

The NRS substitutes defective nozzles with non-defective nozzles until the technician arrives. This feature enables uninterrupted print operations and continuous productivity.

\*1 NRS: Nozzle Recovery System  
\*2 10 nozzles per nozzle row can be registered.

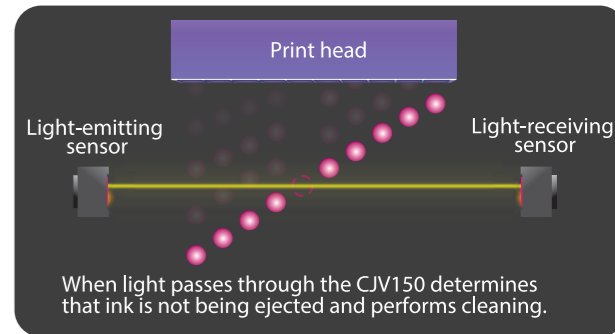


Continue operation with Nozzle recovery.

### Prevention of print quality problems - NCU\*

The CJV150 is equipped with Mimaki's original automatic NCU. Clogged nozzles are automatically detected and cleaned by the NCU. If the clogging is not resolved by cleaning, the CJV150 automatically sets the nozzle recovery function NRS and resumes printing. These functions significantly reduce the waste printing caused by clogged nozzles during a continuous printing run.

\* NCU: Nozzle Check Unit



When light passes through the CJV150 determines that ink is not being ejected and performs cleaning.

### Stable printing using the ink circulation system - MCT\*

MCT is a standard feature included to effectively avoid the settling of white and silver pigments in the ink lines by regularly circulating the ink. It prevents print troubles and enables stable output from the start of operation. In addition, MCT contributes to reduction of ink waste, thereby supporting environmentally and economically friendly applications.

\* MCT is only available for white and silver inks. (MCT = Mimaki Circulation Technology)

